

MN8601

High-performance CMOS Digital Signal Processor (DSP)

■ Outline

The MN8601 is a high-performance CMOS digital signal processor with 16-bit data accuracy which has functions required for digital signal processing.

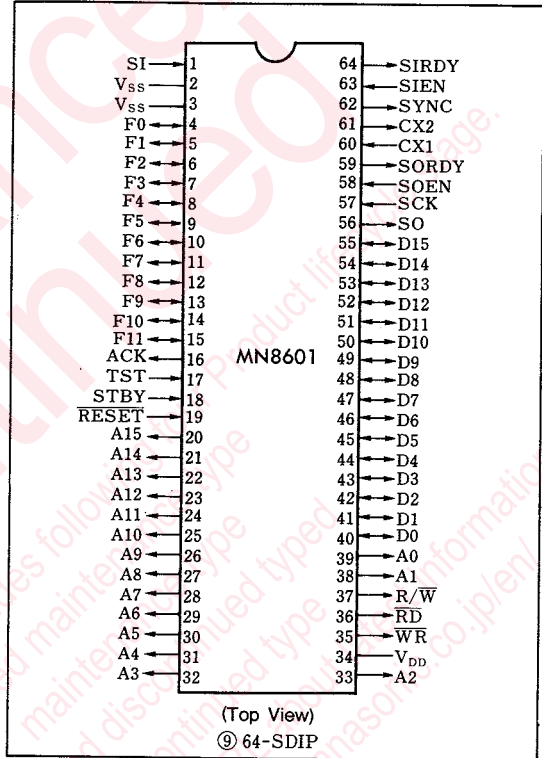
It incorporates a pair of large-capacity data RAMs and an instruction ROM.

A signal processing procedure can be flexibly programmed by an 8-bit(word length)macro-instruction or 32-bit micro-instruction to allow various system configurations and a wide range of application.

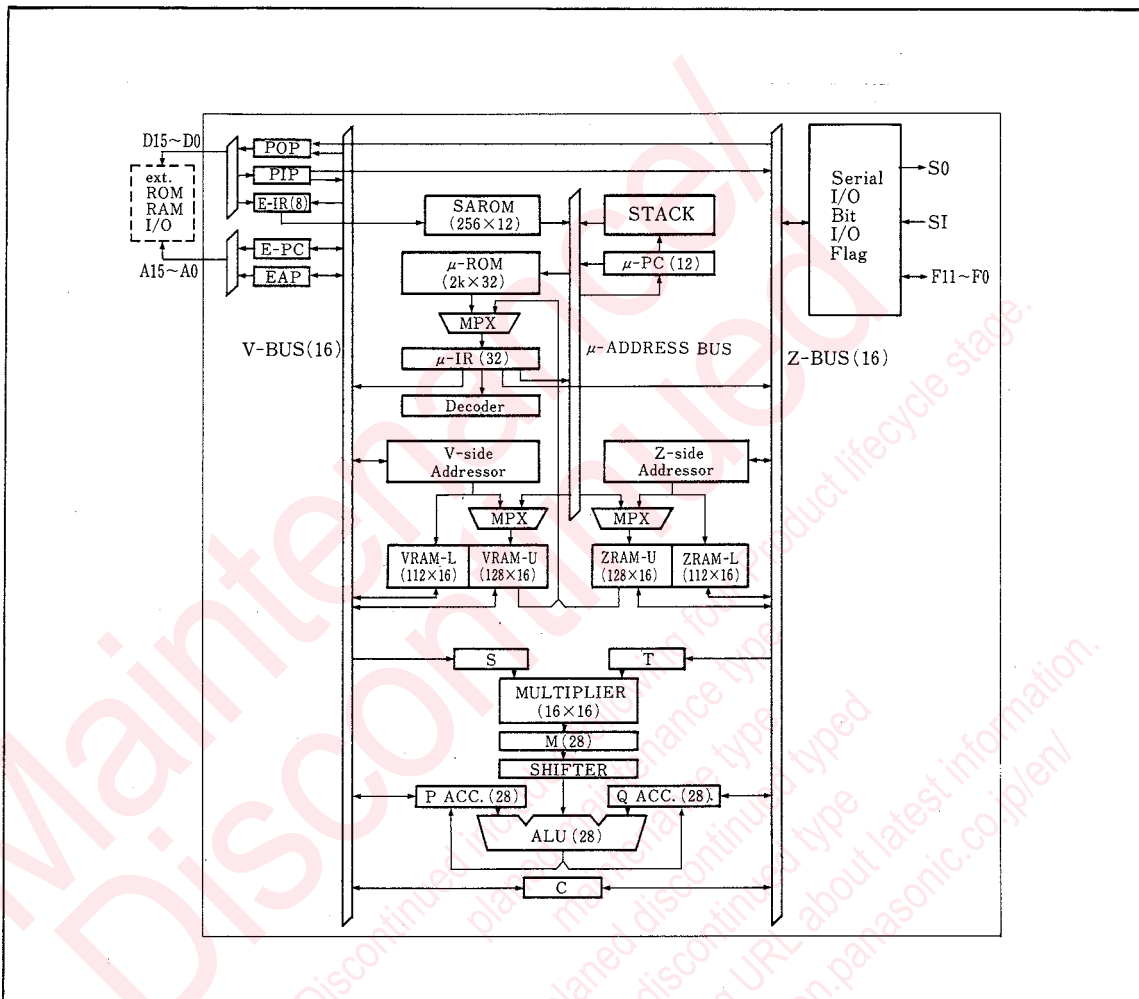
■ Features

- High-speed operation: Machine cycle 190 ns
- Large-capacity built-in RAM: 240 words x 16 bits x 2
- Built-in instruction ROM: 2,048 words x 32 bits
- Built-in parallel multiplier: 16 bits → 28 bits
- Internal RAM configuration variable architecture: Internal RAM switchable as data RAM or microprogram RAM.
- ALU accumulator: 28 bits
- Basic data accuracy: 16 bits
high-accuracy operation enabled
- Interface
 - 64K-word external memory space
 - 16-bit data bus
 - Serial interface
 - 12-bit I/O ports
- Software
 - Flexible programming by marco-instruction sets and micro-instruction sets
 - 8-bit vertical macro-instructions
 - 32-bit horizontal macro-instructions
- CMOS 5 V single power supply
- 64-pin shrunk DIP plastic package (64-SDIP)

■ Pin Configuration



■ Block Diagram



■ Absolute Maximum Ratings ($V_{SS} = 0V$, $T_a = 25^\circ C$)

Item	Symbol	Rating	Unit
Supply voltage	V_{DD}	-0.3 ~ +7.0	V
Input voltage	V_{IN}	-0.3 ~ +7.0	V
Output pin voltage	V_O	-0.3 ~ +7.0	V
I/O pin voltage	V_{IO}	-0.3 ~ +7.0	V
Operating ambient temperature	T_{opr}	0 ~ +70	$^\circ C$
Storage temperature	T_{stg}	-55 ~ +125	$^\circ C$

■ Operating Conditions

Item	Symbol	Condition	min.	typ.	max.	Unit
Supply voltage	V_{DD}	$t_c \geq 190ns$	4.75	5.00	5.25	V
Execution time	t_c		190		4000	ns
Clock frequency	f_{cp}		1.00		21.0526	MHz

■ Electrical Characteristics ($V_{SS}=0V$, $V_{DD}=4.75$ to $5.25V$, $f=21.0526MHz$)

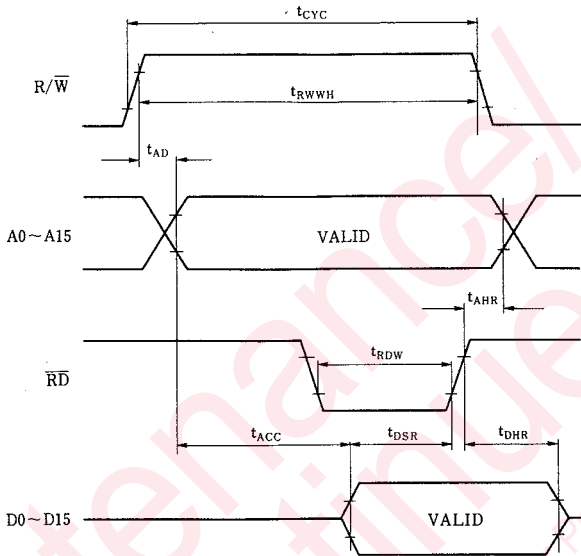
Item	Symbol	Condition	min.	typ.	max.	Unit
Supply current	I_{DD}	$f_{cp}=21.0526MHz$		20	50	mA
Input voltage high level (Clock pin)	V_{IHOSC}		$0.8V_{DD}$		V_{DD}	V
Input voltage low level (Clock pin)	V_{ILOSC}		V_{SS}		0.5	V
Input voltage high level (Other than clock pin)	V_{IH}		$0.7V_{DD}$		V_{DD}	V
Input voltage low level (Other than clock pin)	V_{IL}		V_{SS}		0.8	V
Input current (W/O pull-up)	I_I				± 10	μA
Input current (W/ pull-up)	I_{IVR}	$V_{IN}=0.8V$			-300	μA
Output voltage high level	V_{OH}	$I_{OH}=-400\mu A$	$V_{DD}-0.4$		V_{DD}	V
Output voltage low level	V_{OL}	$I_{OL}=1.6mA$	V_{SS}		0.4	V
Bus cycle time	t_{CYC}		380		8000	ns
Read/write pulse width (High)	t_{RWWH}		320			ns
Read/write pulse width (Low)	t_{RWWR}		320			ns
Address delay time	t_{AD}				40	ns
Address hold time (At read time)	t_{AHR}		0			ns
Address hold time (At write time)	t_{AHW}		15			ns
Read/write hold time (At write time)	t_{RWHW}	$V_{DD}=5.0, V_{SS}=0V$	15			ns
Read pulse width	t_{RDW}	$V_{IH}=0.7V_{DD}, V_{IL}=0.8V$	130			ns
Write pulse width	t_{WRW}	$V_{OH}=0.7V_{DD}, V_{OL}=0.8V$	90			ns
Peripheral read access time	t_{ACC}				250	ns
Data setup time (At read time)	t_{DSR}		70			ns
Data setup time (At write time)	t_{DSW}		120			ns
Data hold time (At read time)	t_{DHR}		10			ns
Data hold time (At write time)	t_{DHW}		15			ns
Clock cycle time	t_{CP}		47.5			ns
Clock high level pulse width	t_{WCPH}	$V_{DD}=5.0, V_{SS}=0V$	15			ns
Clock low level pulse width	t_{WCPL}	$V_{IH}=0.8V_{DD}, V_{IL}=0.5V$	15			ns

■ Pin Descriptions

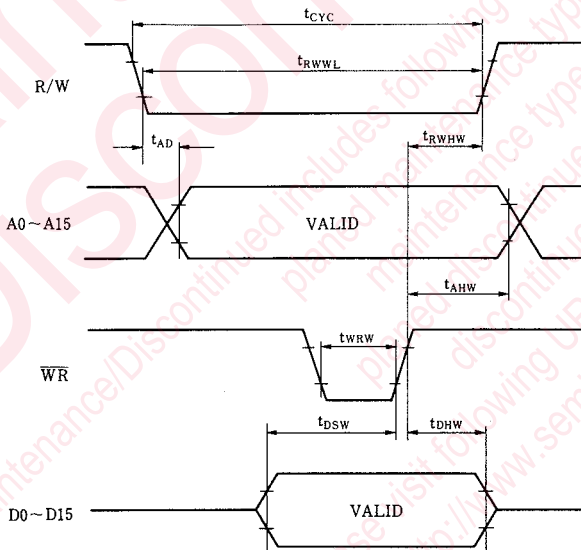
Pin No.	Symbol	Function	Pin No.	Symbol	Function
1	SI	Serial Input	33	A2	Address BUS2
2	V _{SS}	V _{SS} Power Supply	34	V _{DD}	V _{DD} Power Supply
3	V _{SS}	V _{SS} Power Supply	35	WR	Write pulse
4	F0	General Flag0	36	RD	Read pulse
5	F1	General Flag1	37	R/W	Read/Write
6	F2	General Flag2	38	A1	Address BUS1
7	F3	General Flag3	39	A0	Address BUS0
8	F4	General Flag4	40	D0	Data BUS0
9	F5	General Flag5	41	D1	Data BUS1
10	F6	General Flag6	42	D2	Data BUS2
11	F7	General Flag7	43	D3	Data BUS3
12	F8	General Flag8	44	D4	Data BUS4
13	F9	General Flag9	45	D5	Data BUS5
14	F10	General Flag10	46	D6	Data BUS6
15	F11	General Flag11	47	D7	Data BUS7
16	ACK	Acknowledge	48	D8	Data BUS8
17	TST	Test	49	D9	Data BUS9
18	STBY	Stand by	50	D10	Data BUS10
19	RESET	Reset	51	D11	Data BUS11
20	A15	Address BUS15	52	D12	Data BUS12
21	A14	Address BUS14	53	D13	Data BUS13
22	A13	Address BUS13	54	D14	Data BUS14
23	A12	Address BUS12	55	D15	Data BUS15
24	A11	Address BUS11	56	SO	Serial Output
25	A10	Address BUS10	57	SCK	Serial Clock
26	A9	Address BUS9	58	SOEN	Serial Out Enable
27	A8	Address BUS8	59	SORDY	Serial Out Ready
28	A7	Address BUS7	60	CX1	Cristal 1
29	A6	Address BUS6	61	CX2	Cristal 2
30	A5	Address BUS5	62	SYNC	SYNC
31	A4	Address BUS4	63	SIEN	Serial Input Enable
32	A3	Address BUS3	64	SIRDY	Serial Input Ready

■ Timing Diagrams

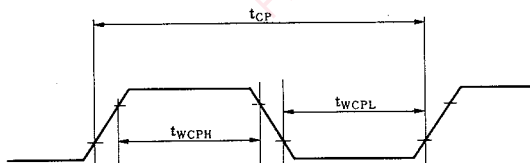
● Read Timing



● Write Timing



● Clock Waveform



Request for your special attention and precautions in using the technical information and semiconductors described in this book

- (1) If any of the products or technical information described in this book is to be exported or provided to non-residents, the laws and regulations of the exporting country, especially, those with regard to security export control, must be observed.
- (2) The technical information described in this book is intended only to show the main characteristics and application circuit examples of the products. No license is granted in and to any intellectual property right or other right owned by Panasonic Corporation or any other company. Therefore, no responsibility is assumed by our company as to the infringement upon any such right owned by any other company which may arise as a result of the use of technical information described in this book.
- (3) The products described in this book are intended to be used for standard applications or general electronic equipment (such as office equipment, communications equipment, measuring instruments and household appliances).
Consult our sales staff in advance for information on the following applications:
 - Special applications (such as for airplanes, aerospace, automobiles, traffic control equipment, combustion equipment, life support systems and safety devices) in which exceptional quality and reliability are required, or if the failure or malfunction of the products may directly jeopardize life or harm the human body.
 - Any applications other than the standard applications intended.
- (4) The products and product specifications described in this book are subject to change without notice for modification and/or improvement. At the final stage of your design, purchasing, or use of the products, therefore, ask for the most up-to-date Product Standards in advance to make sure that the latest specifications satisfy your requirements.
- (5) When designing your equipment, comply with the range of absolute maximum rating and the guaranteed operating conditions (operating power supply voltage and operating environment etc.). Especially, please be careful not to exceed the range of absolute maximum rating on the transient state, such as power-on, power-off and mode-switching. Otherwise, we will not be liable for any defect which may arise later in your equipment.
 - Even when the products are used within the guaranteed values, take into the consideration of incidence of break down and failure mode, possible to occur to semiconductor products. Measures on the systems such as redundant design, arresting the spread of fire or preventing glitch are recommended in order to prevent physical injury, fire, social damages, for example, by using the products.
- (6) Comply with the instructions for use in order to prevent breakdown and characteristics change due to external factors (ESD, EOS, thermal stress and mechanical stress) at the time of handling, mounting or at customer's process. When using products for which damp-proof packing is required, satisfy the conditions, such as shelf life and the elapsed time since first opening the packages.
- (7) This book may be not reprinted or reproduced whether wholly or partially, without the prior written permission of our company.